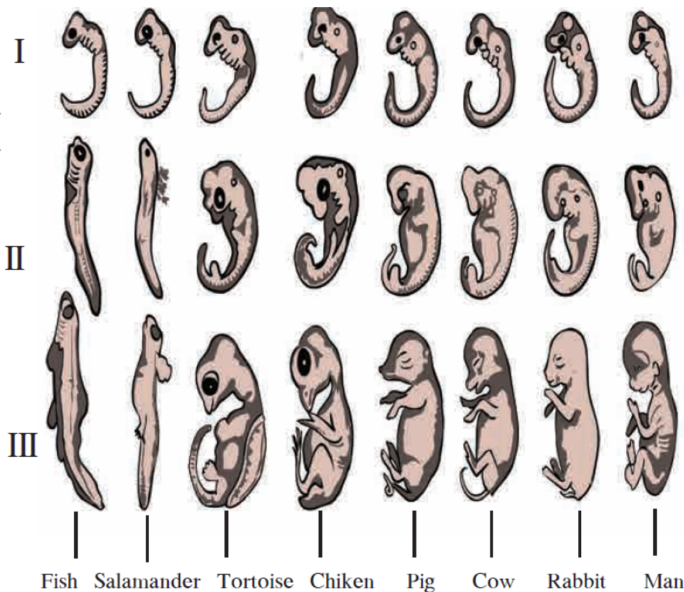


Q.1 Multiple Choice Questions

2

- Evolution means
 - Classification of animals
 - Speciation of animals
 - Gradual development
 - Development of fossils
- The given figure provides essential evidence regarding the evolution of species from one form to another which are referred to as-
 - Anatomical Evidences
 - Morphological Evidences
 - Paleontological Evidences
 - embryological Evidences



Q.2 Find the odd one out


2

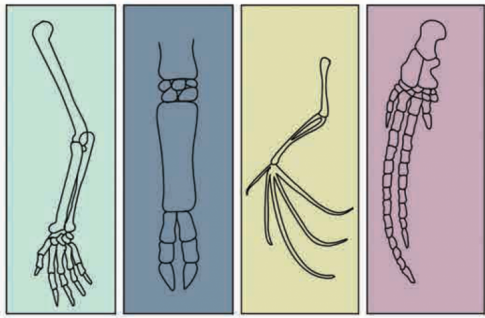
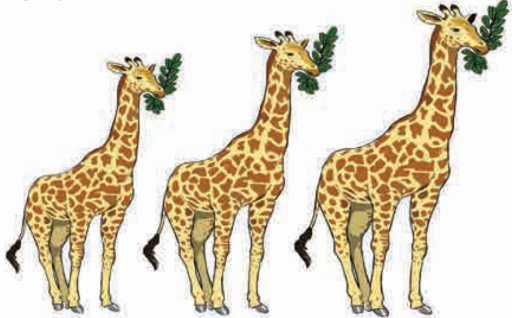
- Human organs - Coccyx, Bones, Appendix, Ear muscles
- Relating to the different groups of animals - Duck billed platypus, Snake, Lungfish, Peripatus

Q.3 Match the pair

2

Column "A"	Column "B"
i. Peripatus	a. Vestigial part
ii. Coccyx	b. Annelida and Arthropoda
	c. Anatomical Evidence
	d. Translocation

Column "A"	Column "B"
i. Anatomical Evidences	a. 

	Some animals with special characteristics
ii. Lamarckism	<p>b.</p>  <p>Human hand Cat's foreleg Patagium of Bat Flipper of Whale</p> <p>Structure of bones</p>
	<p>c.</p>  <p>Giraffe</p>

Q.4 State True or False

2

- 1 The human hand, cat's foreleg, flipper of whale and patagium of bat provide Paleontological Evidences.
- 2 The process of RNA synthesis is called as 'translation'.

Q.5 Name the following

1

- 1 Vestigial organs in human beings.

Q.6 Write laws, theories and explain.(Any One)

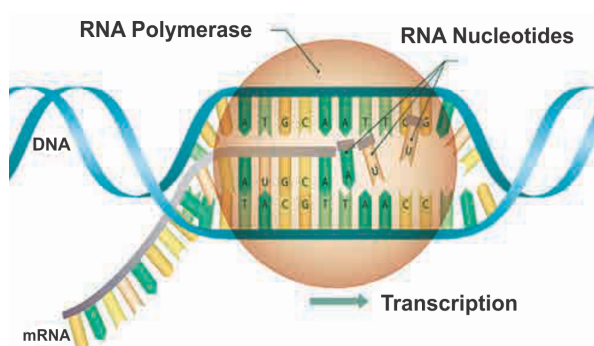
3

- 1 Explain with suitable examples importance of anatomical evidences in evolution.
- 2 Explain Lamarck's theory of 'acquired characters'.

Q.7 Answer the following (Any One)

3

- 1 Explain the process in the given figure regarding gene expression.

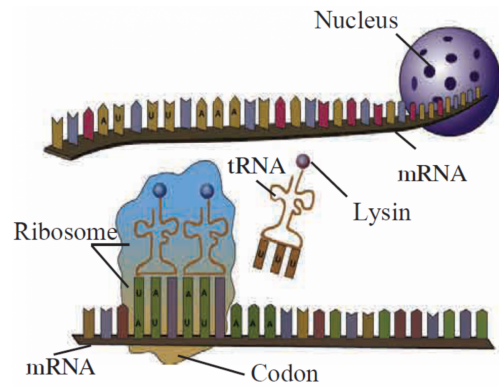


- 2 Is each and every organ useful to organism? Give your opinion.

Q.8 Answer the following in detail

5

1



- i. How is mRNA formed ?
- ii. What is a codon ?
- iii. During Translocation, the movement occurs of over mRNA.
- iv. How does tRNA bind to mRNA ?
- v. How are amino acids bonded together ?